



**NEPHROLOGY FELLOWSHIP  
NEW YORK-PRESBYTERIAN HOSPITAL  
WEILL CORNELL MEDICINE**

**FACULTY MEMBERS**

(Revised: 5-2018)

Manikkam Suthanthiran, MD



Stanton Griffis Distinguished Professor of Medicine  
Professor of Medicine  
Professor of Medicine in Surgery  
Professor of Biochemistry  
Chief, Division of Nephrology and Hypertension  
Chair, Department of Transplantation Medicine & Extracorporeal Therapy  
NewYork-Presbyterian Hospital/Weill Cornell Medicine

Phyllis August, MD, MPH



Ralph A. Baer, MD Professor of Research in Medicine  
Professor of Healthcare Policy and Research  
Professor of Medicine in Obstetrics and Gynecology and Public Health  
Director, Hypertension Center  
Program Director, Nephrology Fellowship Program  
NewYork-Presbyterian Hospital/Weill Cornell Medicine

Irina Barash, MD



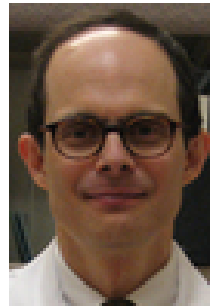
Assistant Professor of Medicine  
Assistant Attending Physician  
NewYork-Presbyterian Hospital/Weill Cornell Medicine  
The Rogosin Institute

Nathaniel Berman, MD



Assistant Professor of Medicine  
Assistant Professor of Medicine in Surgery  
Assistant Attending Physician  
NewYork-Presbyterian Hospital/Weill Cornell Medicine  
The Rogosin Institute

Jon Blumenfeld, MD



Maxwell Professor  
Professor of Clinical Medicine  
Professor of Medicine in Clinical Surgery  
Attending Physician  
NewYork-Presbyterian Hospital/Weill Cornell Medicine  
The Rogosin Institute

Andrew Bohmart, MD



Assistant Professor of Medicine  
Assistant Attending Physician  
NewYork-Presbyterian Hospital/Weill Cornell Medicine  
The Rogosin Institute

James Chevalier, MD



Assistant Professor of Clinical Medicine  
Assistant Professor of Medicine in Clinical Surgery  
Assistant Attending Physician  
NewYork-Presbyterian Hospital/Weill Cornell Medicine  
The Rogosin Institute

Mary Choi, MD



Professor of Medicine  
Attending Physician  
NewYork-Presbyterian Hospital/Weill Cornell Medicine

Darshana Dadhania, MD, MS



Associate Professor of Medicine  
Medical Director, Histo-incompatibility Kidney Transplant Program  
Assistant Director, Immunogenetics and Transplant Center  
Program Director, Transplant Medicine Fellowship  
NewYork-Presbyterian Hospital/Weill Cornell Medicine

David Epstein, MD



Instructor in Medicine  
Assistant Attending Physician  
NewYork-Presbyterian Hospital/Weill Cornell Medicine  
The Rogosin Institute

Carlos Flombaum, MD



Associate Professor of Clinical Medicine  
Weill Cornell Medicine  
Memorial Sloan Kettering Cancer Center

Ilya Glezerman, MD



Associate Professor of Clinical Medicine  
Weill Cornell Medicine  
Memorial Sloan Kettering Cancer Center

Bruce Gordon, MD



Professor of Clinical Medicine  
Professor of Clinical Medicine in Surgery  
Attending Physician  
NewYork-Presbyterian Hospital/Weill Cornell Medicine  
The Rogosin Institute

Choli Hartono, MD



Associate Professor of Clinical Medicine  
Associate Attending Physician  
NewYork-Presbyterian Hospital/Weill Cornell Medicine  
The Rogosin Institute

Edgar Jaimes, MD



Professor of Medicine  
Weill Cornell Medicine  
Chief, Renal Service  
Memorial Sloan Kettering Cancer Center

Chun Lam, MD



Assistant Professor of Clinical Medicine  
Assistant Attending Physician  
NewYork-Presbyterian Hospital/Weill Cornell Medicine  
The Rogosin Institute

Sheron Latcha, MD



Assistant Professor of Clinical Medicine  
Weill Cornell Medicine  
Fellowship Program Site Director  
Memorial Sloan Kettering Cancer Center

John R. Lee, MD, MS



Assistant Professor of Medicine  
Assistant Attending Physician  
NewYork-Presbyterian Hospital/Weill Cornell Medicine

Jun Lee, MD



Assistant Professor of Clinical Medicine  
Assistant Professor of Medicine in Clinical Surgery  
Assistant Attending Physician  
NewYork-Presbyterian Hospital/Weill Cornell Medicine  
The Rogosin Institute

Minji Li, MD



Assistant Professor of Clinical Medicine  
Assistant Attending Physician  
NewYork-Presbyterian Hospital/Weill Cornell Medicine  
The Rogosin Institute

Jonathan T. Lin, MD



Instructor in Medicine  
Assistant Attending Physician  
NewYork-Presbyterian Hospital/Weill Cornell Medicine  
The Rogosin Institute

Frank Liu, MD



Assistant Professor of Clinical Medicine  
Assistant Professor of Medicine in Clinical Surgery  
Assistant Attending Physician  
NewYork-Presbyterian Hospital/Weill Cornell Medicine  
The Rogosin Institute

Michelle Lubetzky, MD



Assistant Professor of Medicine  
Assistant Attending Physician  
NewYork-Presbyterian Hospital/Weill Cornell Medicine

Line Malha, MD



Instructor in Medicine  
Assistant Attending Physician  
NewYork-Presbyterian Hospital/Weill Cornell Medicine

Samuel Mann, MD



Professor of Clinical Medicine  
Attending Physician  
NewYork-Presbyterian Hospital/Weill Cornell Medicine

Thangamani Muthukumar, MD



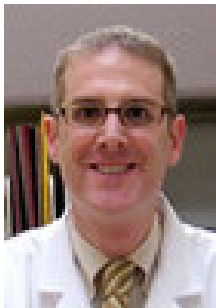
Associate Professor of Medicine  
Associate Program Director (Research), Nephrology Fellowship Program  
Unit Leader, Kidney Module, Health, Illness and Disease Course  
Associate Attending Physician  
NewYork-Presbyterian Hospital/Weill Cornell Medicine

Mark Pecker, MD



Professor of Clinical Medicine  
Professor of Clinical Medicine in Physiology and Biophysics  
Attending Physician  
NewYork-Presbyterian Hospital/Weill Cornell Medicine

Alan Perlman, MD



Assistant Professor of Clinical Medicine  
Assistant Professor of Medicine in Clinical Surgery  
Assistant Attending Physician  
NewYork-Presbyterian Hospital/Weill Cornell Medicine  
The Rogosin Institute

Stuart Saal, MD



Professor of Clinical Medicine  
Professor of Clinical Medicine in Surgery  
Attending Physician  
NewYork-Presbyterian Hospital/Weill Cornell Medicine  
The Rogosin Institute

Insara Jaffer Sathick



Instructor in Medicine  
Weill Cornell Medicine  
Memorial Sloan Kettering Cancer Center

David Serur, MD



Associate Professor of Clinical Medicine  
Associate Professor of Medicine in Clinical Surgery  
Associate Attending Physician  
NewYork-Presbyterian Hospital/Weill Cornell Medicine  
The Rogosin Institute

Raymond Sherman, MD



Clinical Professor of Medicine  
Attending Physician  
NewYork-Presbyterian Hospital/Weill Cornell Medicine

Roman Shingarev, MD



Instructor in Medicine  
Assistant Attending Physician  
NewYork-Presbyterian Hospital/Weill Cornell Medicine  
Memorial Sloan Kettering Cancer Center

Jeffrey Silberzweig, MD



Associate Professor of Clinical Medicine  
Associate Professor of Clinical Medicine in Surgery  
Associate Attending Physician  
NewYork-Presbyterian Hospital/Weill Cornell Medicine  
Fellowship Program Site Director  
The Rogosin Institute

Barry Smith, MD, PhD



Professor of Clinical Surgery  
Attending Physician  
NewYork-Presbyterian Hospital/Weill Cornell Medicine  
President and Chief Executive Officer  
The Rogosin Institute



Vesh Srivatana, MD



Instructor in Medicine  
Assistant Attending Physician  
NewYork-Presbyterian Hospital/Weill Cornell Medicine  
The Rogosin Institute

John Wang, PhD, MD



Professor of Clinical Medicine  
Professor of Clinical Medicine in Surgery  
Attending Physician  
NewYork-Presbyterian Hospital/Weill Cornell Medicine  
The Rogosin Institute

Alan Weinstein, MD



Professor of Medicine  
Professor of Physiology and Biophysics  
Attending Physician  
NewYork-Presbyterian Hospital/Weill Cornell Medicine

Surya Seshan, MD



Chief, Renal Pathology  
Professor of Clinical Pathology and Laboratory Medicine  
Attending Pathologist  
NewYork-Presbyterian Hospital/Weill Cornell Medicine

Steven Salvatore, MD



Assistant Professor of Pathology and Laboratory Medicine  
Assistant Attending Pathologist  
NewYork-Presbyterian Hospital/Weill Cornell Medicine